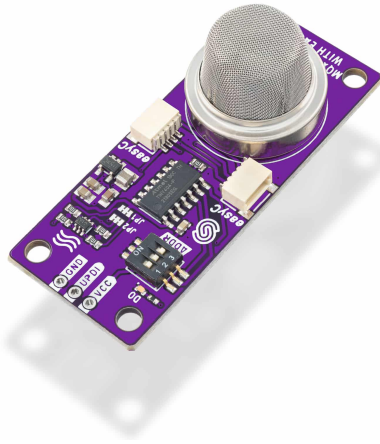




LPG, BUTANE SENSOR MQ6 BREAKOUT WITH EASYC



Weight 11.10 g

Description a

DESCRIPTION

Humans can detect many smells, but may have difficulty distinguishing gases. That's why we use sensors like the MQ6 that detects LPG and butane in the air. When heated to the optimal operating temperature, it very quickly detects changes in air concentration between 200 and 10,000 ppm.

The breakout board provides digital and analog information via the easyC system. Sensor readings are obtained via easyC.

Product usage tips:

When gas is detected, the LED will start glowing. It will remain off if it doesn't detect anything. Four mounting holes enable easy mounting to surfaces. The board comes with three male headers.

FEATURES

- Detects: LPG (Liquefied petroleum gas), butane
- Voltage: 3V3
- Output: digital
- ATTiny404 microcontroller onboard
- easyC connectors
- Dimensions: 54 x 22 mm / 2.1 x 0.9 inch

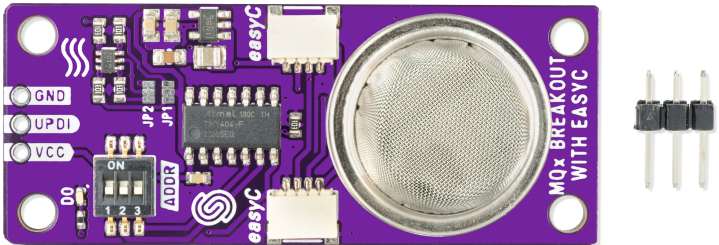
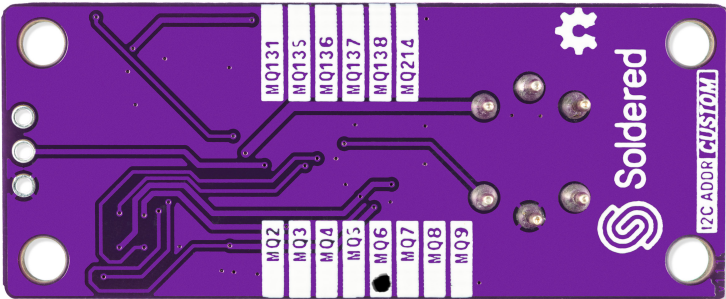
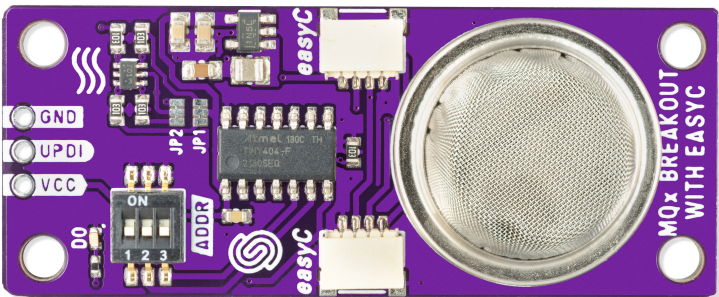
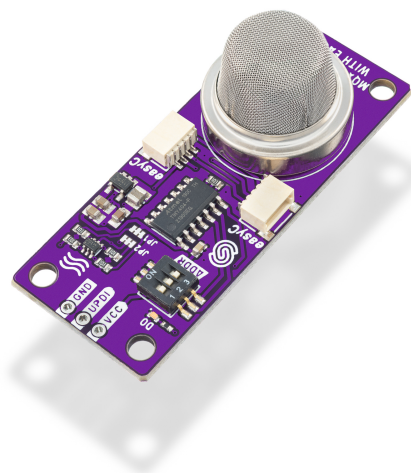
USEFUL LINKS

- [Arduino Library](#)
- [Pinout](#)



- [Datasheet](#)
- [Open-Source Hardware files](#)

OTHER IMAGES



Weight	11.10 g
Description	a